

EVA soles

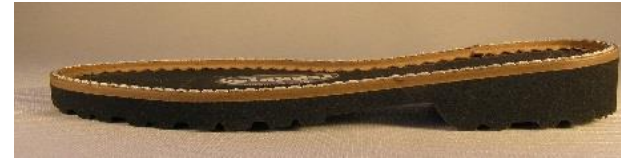
The EVA soles are manufactured according to the customer's wishes and their own umris. Examples of colors available are white and black, with a weld of beige or dark gray. You can choose from various EVA bases with hardness, thickness, color and pattern; welds of various materials, colors, thicknesses and stitches. Please inquire options that are convenient for you. The minimum order quantity is 500 pairs / model / color. Below are two examples of the soles to be delivered.

Art.nr 3444

thickness 24 mm, hardness 55 ShA

sizes 35-42

150 gr /pair, size 37



Art.nr 3440

thickness 24 mm, hardness 55 ShA

sizes 35-42

200 gr /pair, size 42

